

CRMS Schooner News



Kindness

Responsibility

Self Control

Grit

IMPORTANT DATES

Monday, April 1 - PTA meeting at

CRMS Cafe, 5:30pm

Tuesday, April 2 - MEA testing till

11:35 am, 5-8th grade

Wednesday, April 3 - **EARLY**

RELEASE DAY • 1:15pm

dismissal

Friday, April 3 - Quarter 3 ends

Thurs. April 4th - MBDA band festival

Friday, April 5th - District III Band and Chorus Honors Festival

Friday, April 5th - 5th Grade Activity Night, 5:30-7:30pm

Monday, April 8th - Quarter 4 begins

Tuesday, April 9th & 10th - 5th Grade to Gulf of Maine Aquarium

Tuesday, April 9th - 6th/7th Grade to CHRHS Strom for Bay Chambers concert, A World of Musicals

Thursday, April 11th - 8th grade Japan Exchange travelers leave for Japan!

(cont. on page 2)

Principal's Corner

Dear Schooner Families,

Spring is finally here! As we move into the last trimester of the school year, we have a few elements that need your support! The first is grading, reporting and students' overall achievement and the second is students' attendance in SY 2019-2020.

This week you will receive your child's trimester 2 report card! I've attached a letter to each report card with action steps. Please take the time to read the letter and engage with your child around their learning experiences so far this year. Our partnership is essential to your child's success as we know only part of a child's education happens during the school day.

The 2019-2020 school year calendar is out! You will notice that the CRMS school calendar is very different than usual and different than both CRES and CHRHS. For instance, CRMS students attend school the week of Thanksgiving, a few days in between December break and New Year's, and do not have a full February break. We also dismiss for the summer on June 5, 2020. The calendar has been developed this way as we need a **full summer** to finish construction on the new school building before opening in September of 2020. We need your help in making this calendar work! I ask that you consider the opportunity to help us make SY 2020 a success by having your children attend school when we are in session. Students' attendance has a tremendous impact on their academic achievement and our ability to establish an effective learning community. We realize this will cause some challenges for families who have children who attend other schools and we hope you will consider making adjustments for the coming year.

We appreciate your partnership and hope you reach out to us with any questions!

Together we are stronger!

Jaime Stone
Principal

IMPORTANT DATES (cont.)

Thursday, April 11th - Girls Coalition field trip to Girls Rock Conference in Waterville, depart CRMS at **7:25am**

Friday, April 12th - **Early Release Day, 11:30 am dismissal • Vacation begins**

Wednesday, April 24th - MSAD #28 School Board meeting with band performance, CRMS - 6pm Finance meets, 7pm board meeting begins

Tuesday, April 30th, Wednesday, May 1st - MEA Science assessment

Friday, May 3rd - CRMS Dance for 6th - 8th graders, 7-9pm. \$5. admission, concessions available! Students MUST be picked up at 9pm sharp!

PLEASE CHECK THE LOST AND FOUND RACKS BEFORE YOU LEAVE FOR APRIL BREAK FOR ANY MISSING ITEMS!

THE CRMS FRONT OFFICE WILL BE CLOSED FOR APRIL BREAK FROM MONDAY, APRIL 15TH THROUGH FRIDAY, APRIL 19TH.

PLEASE REMIND YOUR STUDENTS TO CLEAN OUT THEIR LOCKERS AND BRING HOME EVERYTHING THEY NEED ON FRIDAY, APRIL 12TH AT 11:30 EARLY DISMISSAL!
HAPPY SPRING BREAK!



NURSE OFFICE WISH LIST

Stretchy pants all sizes
Rice packs

REMINDER - send your children to school with some extra clothes... mud season is upon us and we are outside most days!



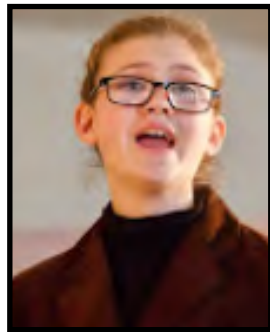
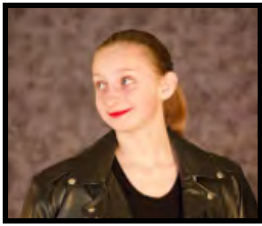
THE NEXT WALK AND BIKE TO SCHOOL WILL BE IN EARLY MAY • LOOK FOR DETAILS IN THE MAY NEWSLETTER!

**FREE STUDENT/TEACHER ADMISSION
Museum of Fine Arts Boston (MFA)
Lunder Maine Student Membership Program**

Allows Maine students of all ages in public and private school, as well as home school students, to visit the Museum free of charge (you just have to get there)

To request a school group visit, see School Group Options and Reservations and indicate that you are visiting from a school in Maine when filling out a request form.

FREE ADMISSION FOR MAINE K-12 Teachers
Receive free admission with proof of active teaching status in a K-12 school, afterschool, or community setting in ME. Visit any MFA ticket desk and present your current teacher ID or a letter from the principal or director on letterhead. You will be asked to provide your e-mail address. Retired teachers and home school educators are not eligible.
Become a member with a \$30 discount for educators



6TH GRADE SCIENCE NEWS!

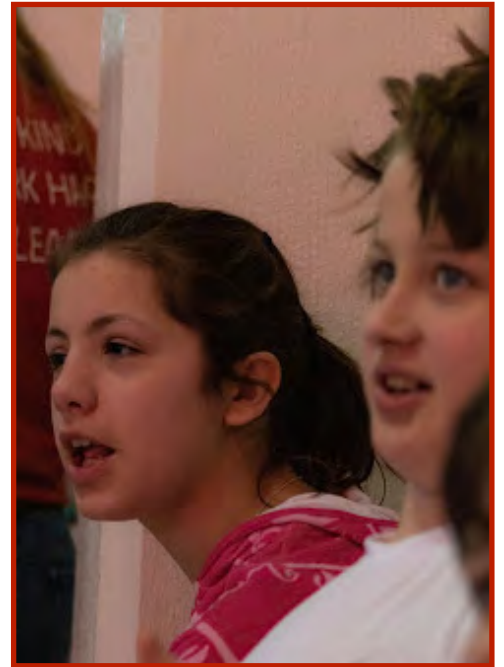
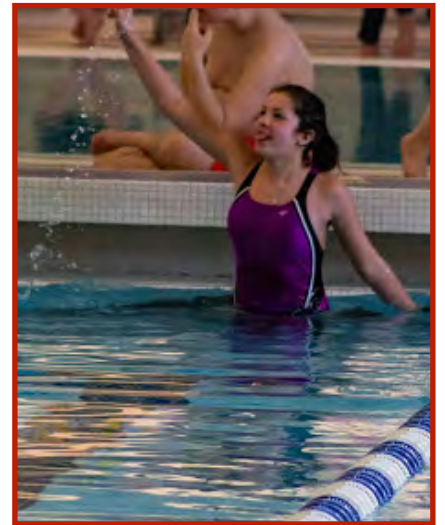
For our early release this month, students participated in STEM competitions where they put their designing, building and teamwork skills to the test. Teams built mangonels and rockets and competed in distance trials to determine the winners for distance in each category. Everyone did a great job and had lots of fun- special congratulations to David Stephenson, Zeke Dietter, Teagan Lowe, and Cadence Ankers for coming out on top!



SPECIAL OLYMPICS!

Four CRMS students proudly represented our school at the Knox and Waldo County Regional Special Olympics Swim meet.

Max Mahoney, Fisher Thomas, Levi Thomas and Emma Deetjen all swam in the 25 yard freestyle, 50 yard freestyle and the 25 yard backstroke!



7th graders celebrating Pi Day! Students started the day with a measuring activity to calculate the ratio of circumference to diameter and then traveled through three math-focused activity sessions, including using a compass to create beautiful geometric shapes, starting with six points on a circle.

7TH GRADE NEWS!



A LOOK BACK AT SPIRIT WEEK 2019



TUG OF WAR!!



CRMS Wrestling had a solid season on the mat going 7-5 in the regular season, finishing 2nd at the East West Crossover Tournament, 3rd at the Regional Meet, and 5th at the League Championship ("State") Meet. Regional place winners (state qualifiers) were: Griffin Neal 75, Julian Henderson 87, Zach Gilbert 93, Micheal Rollins 99, Will Haslam 111, Dominic Roy 123, Griffin Carnell 145, and Saxton Smith 195.



State place winners were Zach Gilbert 4th at 93, Julian Henderson undefeated League Champion at 87, Micheal Rollins League Champion and tournament Outstanding Wrestler at 99, Griffin Carnell 4th at 145 and Saxton Smith 4th at 195.





Congratulations to the 5th grade Destination Imagination team! They won second place at the State Competition on Saturday when they presented a skit about a community project that they did to teach others about green crabs and how they are an invasive species impacting our local community. Way to go girls!

Please welcome our new crew member, Chris McBride! Chris has taken Ben Cooke's place as an interventionist in our RTI program. Thank you Ben and good luck in your new adventures working for the Homeless Coalition in Rockland and welcome Chris! We are excited to have you onboard!



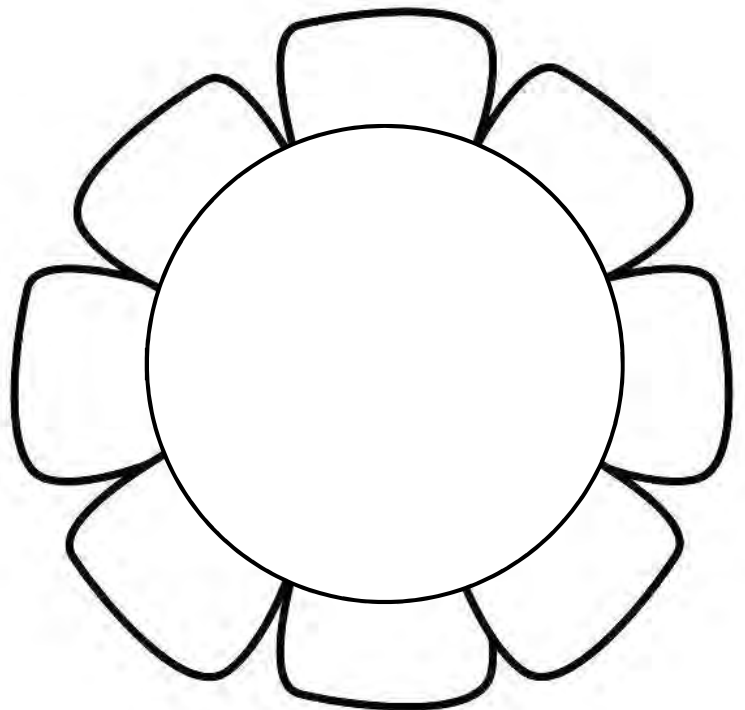
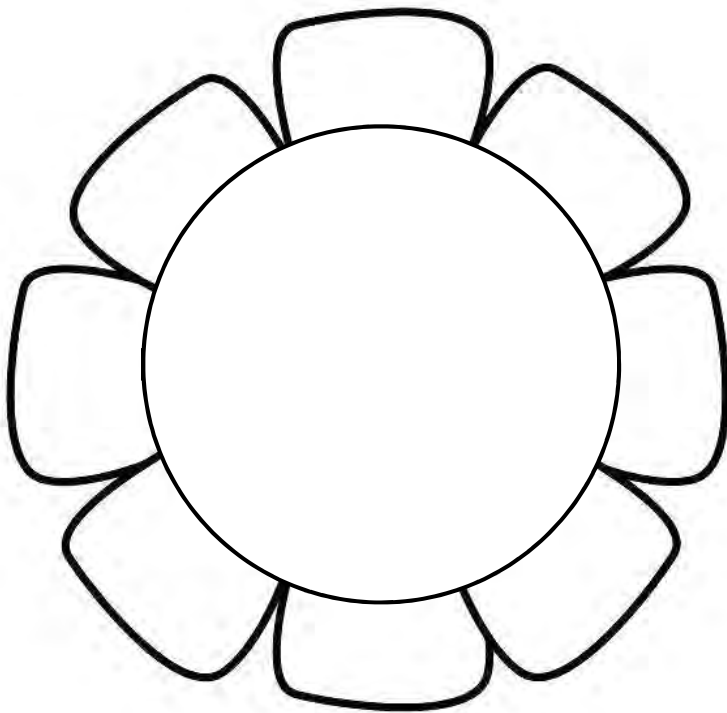
CONGRATULATIONS TO MS. OAKES ON THE ARRIVAL OF HER NEW BABY GIRL!

Staff Appreciation

The Staff Appreciation event at the Middle School will be held on Wednesday, May 8th at 2 pm. We're hoping you can help us celebrate our wonderful staff! We will be looking for volunteers to help set up and clean up for the event itself, and to provide food and/or monetary donations. Please watch the PTA Facebook page for the volunteer sign up forms. Also, please encourage your student to fill out notes of appreciation (attached) for the staff members at school – teachers, administrators, custodians, bus drivers and all other staff. We will hang these notes on the wall in the cafeteria during the event.

OUR STAFF HELPS OUR STUDENTS GROW AND BLOOM.

Staff appreciation is coming up at CRES, CRMS and the Bus Barn. Students, use these designs to write notes of appreciation to staff. You can write a note to anyone at the school or offices – teachers, custodians, specials teachers, secretaries, bus drivers, administrators, cafeteria workers... anyone you want to thank! Decorating the notes is encouraged, we want our schools blooming with beautiful flowers. The notes will hang on the walls during Staff Appreciation events. Feel free to make copies or pick up extras at the school. Return the notes by Friday, April 26th (CRES) or Friday, May 3rd (CRMS). Returning flowers already cut out is a huge help!



Riley Nights Act Sign Up

We are looking for kids to share their talent and skills with the community. This is a non-competitive monthly talent show and fundraiser, open to all kids, teens and young adults of the Midcoast community.

All participants may enter a drawing for a free week at RILEY DAYS: April Vacation Camp!

RILEY NIGHTS is a fundraiser for Riley School Vacation Scholarship Fund. Suggested donation \$5 for audience members.

Show will take place in the Riley School theater building, beginning at 6:00pm with a short rehearsal prior to house opening.

Deadline for April 19th event sign up is April 17th

Deadline for May 24th event sign up is May 22nd

For questions and additional info contact Emma at riley.school.nights@gmail.com or through facebook (<https://www.facebook.com/events/553943435100929/>)

APRIL IS YEARBOOK MONTH!

YEARBOOKS MAY BE PURCHASED DURING THE MONTH OF APRIL FOR \$15.00.

BEGINNING MAY 1ST, THE COST IS \$18.00

PLEASE MAKE CHECKS PAYABLE TO CRMS

ORDER FORMS ARE AVAILABLE IN THE CRMS OFFICE.

GET YOUR ORDER IN EARLY!





Penobscot Bay YMCA • Rockland Harbor YMCA
2019 SUMMER CAMP
 Quality Day Camps for Youth Ages 4-13

At our Y summer camps, children learn leadership skills and develop self confidence in a safe, accepting, and stimulating environment. They also build rockets, go fishing & canoeing, take field trips all over our great State of Maine, swim, make new friends, and laugh all summer long! Parents and kids agree, when it comes to the Y's summer programs, nobody offers an experience like ours!

We are proud to offer a wide array of fun and affordable day camps!

- **ROCKLAND HARBOR YMCA SUMMER CAMP**
 - Ages: 7-12
 - Home Base Location: Chickawaukie Lake, Rockland
- **PBY DISCOVERY CAMP**
 - Ages: 4-6 (Grades K-1)
 - Campers must meet fall 2019 kindergarten public school eligibility
 - Home Base Location: Lincolnville Central School
- **SNOW BOWL CAMP** - Presented by the Penobscot Bay YMCA
 - Formerly known as Camp-A-Homa
 - Ages: 7-10
 - Home Base Location: Camden Snow Bowl
- **PBY ADVENTURE CAMP**
 - Ages 11-13

For more information on pricing, financial assistance, weekly schedules, field trips & before/after care, please visit or call!

PENBAYYMCA.ORG
 • PBY - 236.3375
 • RHY - 593.8500
 • FCC - 594.0321



Register Now!

Summer Camp at the Y is about discovery, exploring nature, finding new talents, and making lasting friendships. Camp is another avenue provided by the Y to fulfill our mission of youth development, healthy living and the social needs of individuals and families in the communities we serve. YMCA camps are accessible to everyone regardless of financial need and we are proud to say that no child is turned away.

If you are in need of financial assistance for Summer Camp, it is in your best interest to first apply to the Department of Health and Human Services (DHHS). If you qualify, you could receive assistance for all nine weeks of camp as well as vacation camp and snow camp. For more information visit www.maine.gov/mymaineconnections or call the Rockland office at 207.596.4200. If you are approved by DHHS, please contact Lydia Shook: lshook@penbayymca.org or 236.3375 x 207. The Y will need a copy of the DHHS letter stating what they will pay and what your parent fee will be.

If you don't qualify for DHHS assistance, please ask our Welcome Center folks for a Camp Scholarship Application or download from our website at www.penbayymca.org. Once the scholarship is awarded, you will receive a letter with the scholarship amount and the remaining balance you are responsible for paying prior to the weeks of camp awarded. The Y provides two weeks of scholarship assistance per child.

WE'D LOVE TO HEAR YOUR STORY! THANK YOU.

What benefits do you see in having financial assistance to participate in our Summer Camp programs? Does the Penobscot Bay YMCA have your permission to use your first name with your story in donor letters, online newsletters and member e-blasts? Yes No
 Would you like to remain anonymous? Yes No

APPLICANT INFORMATION

Applicant Name Applicant's D.O.B.
 Home Address Home Phone
 City State Zip Cell Phone
 Employer Work Phone
 Marital Status Single Married Other Phone
 Spouse Name Spouse D.O.B.
 Spouse Employer Work Phone

ADJUSTED GROSS TOTAL HOUSEHOLD INCOME

	APPLICANT	SPOUSE
Employment	\$.....	\$.....
Child Support	\$.....	\$.....
Government Assistance	\$.....	\$.....
Retirement/Pension	\$.....	\$.....
Other	\$.....	\$.....
Total Household Income	\$.....	\$.....

MEMBERSHIP

- Are you currently a Y member? Yes, at theYMCA No
- I would like to apply for the following membership: Youth Family Single Parent Family
- Have you filled out the member application? Yes No
- If not, please complete it and return with this application.

CERTIFICATION OF INFORMATION

I certify that all information on my application is true and complete to the best of my knowledge and any misrepresentations may result in automatic membership termination and suspension from making future applications.

Signature of Applicant Date



FOR OFFICE USE ONLY

Camper's Name _____
 Parent's Name _____
 Scholarship Award _____ # of Weeks _____
 Weekly Fee _____
 Camp _____
 Staff Signature _____ Date _____
 Note _____

**Penobscot Bay YMCA
 CAMP SCHOLARSHIP APPLICATION**

If you are in need of financial assistance for Summer Camp, it is in your best interest to first apply to the Department of Health and Human Services (DHHS). If you qualify, you could receive assistance for all nine weeks of camp as well as vacation camp and snow camp.

For more information visit www.maine.gov/mymaineconnections or call the Rockland office at 596-4200. If you are approved by DHHS, please contact Lydia Shook: lshook@penbayymca.org or 236.3375, x 207. The Y will need a copy of the DHHS letter stating what they will pay and what your parent fee will be.

If you don't qualify for DHHS assistance and in order for us to process your scholarship request, we will need the following information from you:

- Scholarship Application
- Financial documents such as: most recent tax return, SSI letter, unemployment letter, TANF Food Stamps
- Camp Registration Form
- Immunization Records
- DHHS denial or ineligible letter
- Your Story (optional, but appreciated)

Once the scholarship is awarded, you will receive a letter with the scholarship amount and the remaining balance you are responsible for paying in full prior to the weeks of camp awarded. The Y provides two weeks of scholarship assistance per child.

CAMPER INFORMATION

Child #1 _____
 Child #2 _____
 Child #3 _____

Which camp program do you want your child to attend? Pre-Week (RHY only)
 Discovery Camp Snow Bowl Camp Adventure Camp Sports Camp RHY Summer Camp

What weeks of camp do you need assistance with? (check the circle)
 Week 1 Week 2 Week 3 Week 4 Week 5 Week 6 Week 7 Week 8 Week 9

Questions? Please contact: Marcia Roberts • 236.3375 ext. 209
mroberts@penbayymca.org

Camden-Rockport Middle School 2019-2020 School Calendar Grades 5-8

JULY						
S	M	T	W	T	F	S
	1	2	3	4	5	6
7	8	9	10	11	12	13
14	15	16	17	18	19	20
21	22	23	24	25	26	27
28	29	30	31			

AUGUST (0)						
S	M	T	W	T	F	S
				1	2	3
4	5	6	7	8	9	10
11	12	13	14	15	16	17
18	19	20	21	22	23	24
25	26	TP	W	W	30	31

August 27 Teacher Prep
August 28,29 Teacher Workshop Day

Student Days	
Month	Days
Aug	0
Sept	20
Oct	22
Nov	17
Dec	17
Jan	21
Feb	18
Mar	22
Apr	17
May	20
June	2
Total	176

SEPTEMBER (20)						
S	M	T	W	T	F	S
1	H	O	4	5	6	7
8	9	10	11	12	13	14
15	16	17	ER	19	20	21
22	23	24	25	26	27	28
29	30					

OCTOBER (22)						
S	M	T	W	T	F	S
		1	2	3	4	5
6	7	8	9	10	11	12
13	H	15	16	17	18	19
20	21	22	ERH	24	ERH	26
27	28	29	30	31		

September 2 Labor Day
September 3 First Day of School
September 18 Early Release (1:15)
October 14 Columbus Day
October 23, 25 Early Release (11:30) for conferences

NOVEMBER (17)						
S	M	T	W	T	F	S
					1	2
3	4	5	ER	7	8	9
10	H	12	13	14	15	16
17	18	19	20	21	22	23
24	25	26	X	H	X	30

DECEMBER (17)						
S	M	T	W	T	F	S
1	2	3	4	5	6	7
8	9	10	ER	12	13	14
15	16	17	18	19	20	21
22	X	X	H	X	X	28
29	30	31				

November 6 Early Release (1:15)
November 11 Veterans Day Observed
November 26 T1 Ends
November 27-29 Thanksgiving Break
Dec 11 Early Release (1:15)
Dec 23 - Dec 27 Holiday Break

Teacher Days	
Month	Days
Aug	3
Sept	20
Oct	22
Nov	17
Dec	17
Jan	21
Feb	19
Mar	22
Apr	17
May	20
June	7
Total	185

JANUARY (21)						
S	M	T	W	T	F	S
			H	2	3	4
5	6	7	8	9	10	11
12	13	14	ER	16	17	18
19	H	21	22	23	24	25
26	27	28	29	30	31	

FEBRUARY (18)						
S	M	T	W	T	F	S
						1
2	3	4	ER	6	7	8
9	10	11	12	13	ERH	15
16	H	W	19	20	21	22
23	24	25	26	27	28	29

January 1 New Year's Day
January 15 Early Release (1:15)
January 20 Martin Luther King, Jr. Day
February 5 Early Release (1:15)
February 14 Early Release (11:30) 1/2 Teacher Day
February 17 Holiday
February 18 Workshop Day

Trimester Days	
T1	Days
T1	59
T2	61
T3	56
Total	176

MARCH (22)						
S	M	T	W	T	F	S
1	2	3	4	5	6	7
8	9	10	ER	12	13	14
15	16	17	18	19	20	21
22	23	24	25	26	27	28
29	30	31				

APRIL (17)						
S	M	T	W	T	F	S
			1	2	3	4
5	6	7	ER	9	10	11
12	13	14	15	16	ERH	18
19	H	X	X	X	X	25
26	27	28	29	30		

March 6 T2 Ends
March 11 Early Release (1:15)
April 8 Early Release (1:15)
April 17 Early Release (11:30) 1/2 Teacher Day
April 20-24 Spring Break

MAY (20)						
S	M	T	W	T	F	S
					1	2
3	4	5	6	7	8	9
10	11	12	ERH	14	ERH	16
17	18	19	20	21	22	23
24	H	26	27	28	29	30
31						

JUNE (2)						
S	M	T	W	T	F	S
		1	O	TP	W	W
7	M	M	10	11	12	13
14	15	16	17	18	19	20
21	22	23	24	25	26	27
28	29	30				

May 13,15 Early Release (11:30) for conferences
May 25 Memorial Day
June 2 *Last Day of School/T3 Ends
June 3 Teacher Prep
June 4+5 Teacher Workshop - Packing Days
June 8+9 Teacher Moving Days - Flex

- O= First/Last Day of School
- W= Workshop Day (no school)
- H= Holiday (no school)
- X= Vacation (no school)
- ER= Early Release (1:15 dismissal)
- ERH= Early Release Half Day (11:30 dismissal)
- TP= Teacher Prep (no school)

***If there is a snow DELAY on an Early Release day, (ER, ERH) the early release will not occur.**

***School will not go past June 5 in 2019-20 for CRMS
If there are more than 3 snow days, we will make them up on Saturdays or in an alternative way**

Approved by MSAD 28 School Board on Feb 27, 2019